

Installation Instructions

Model:	Jeep Wrangler JL (Pg.1-5 & 12) & Jeep Wrangler JK (Pg.6-12)
Description:	MB Quart Jeep JL Wrangler 12" Subwoofer Enclosure
Part Number:	MBQJL-302 MBQJL-302E - Unloaded Enclosure
Assembly Time:	90 Minutes (1.5-Hours)

Before you begin, read through these instructions and check that all parts are present. Please note that MB Quart cannot assume any responsibility for damage resulting from incorrect installation.

Parts List		
No.	Component Name	Qty
1	Subwoofer Enclosure	1
2	ST4.2 x 19mm Screw	14
3	M6 x 60mm Flathead Screw	2
4	M6 x 60mm Bolt	2
5	7mm Rubber Plug	4
6	9mm Rubber Plug	2
7	L Bracket	2
8	M6 x 16mm Torx Screw	2
9	M6 x 40mm Hex Bolt with Flange (Wrangler JK/JKU Only)	4
10	13 x 30mm Spacer	2
11	13 x 45mm Spacer	2
12	M6 Washer	2
13	8" Zip Tie	6
14	Grill	1
15	White Gasket	1
16	Wire Harness	1

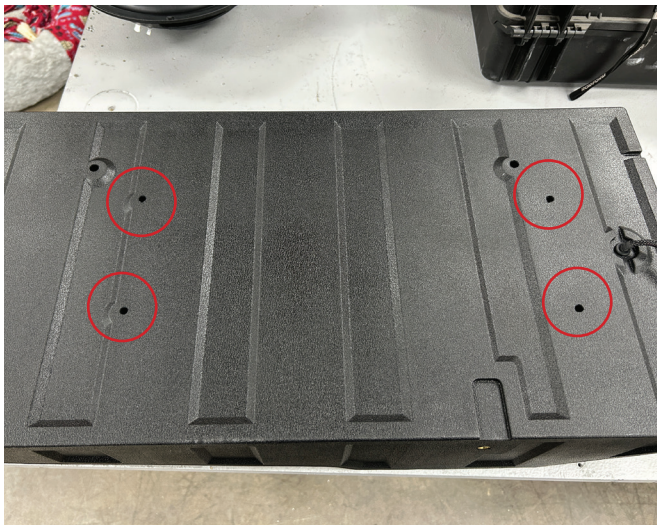
Tools Required	
1	Bojo or Panel Tool
2	T20 Torx Driver
3	T40 Torx Driver (Trailrail Equiped Only)
4	9/16" Drill Bit 23/64" Drill bit (Wrangler JK/JKU Only)
5	Drill
6	4mm Allen Wrench
7	10mm Socket
8	Threaded Insert Rivet Nut Tool

Disassembly Instructions

- Remove four T20 Torx screws holding the subwoofer in the enclosure. Then disconnect the wiring from the subwoofer.



- Install four 7mm rubber plugs into the inside of the enclosure.



- Install the white gasket material into the channel of the grill.



Wrangler JL Disassembly Instructions

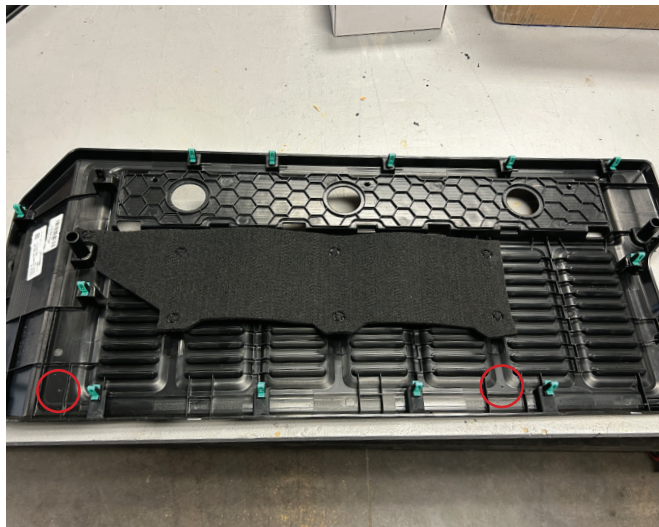
- Disconnect negative battery terminal of the vehicle.
- If Trailrail equipped - remove three T40 screws and remove rail.
- If Trailrail ready - use panel tool to unclip cover and remove.



- Using a panel tool - carefully unclip the tailgate panel and remove.



- With the tailgate panel laying face down, drill two 9/16" holes at the dimples at the bottom of the panel.



Wrangler JL Installation Instructions

- Install the tailgate panel back into the vehicle by snapping into location.



- Install two L brackets, 45mm spacers, and M6 x 60mm flathead screws in the bottom two holes of the tailgate panel with a 4mm Allen wrench.



- Loosely install two M6 x 16mm Torx screws with a T40 Torx driver.

NOTE - You will tighten in another step.



Wrangler JL Installation Instructions

- Loosely install (2) M6 x 60mm Hex bolts with 10mm socket.

NOTE - You will tighten in another step.



- Tighten down the two M6 Torx screws on the bottom of the enclosure with a T40 Torx driver.



Wrangler JK Installation Instructions

- Remove (4) T20 Torx screws holding the subwoofer in the enclosure. Then disconnect the wiring from the subwoofer.



- Install (2) 7mm rubber plugs into the inside of the enclosure.



- Install the white gasket material into the channel of the grill.



Wrangler JK Installation Instructions

- Using panel tool - carefully remove upper tailgate trim panel



Wrangler JK Installation Instructions

- Cut out the alignment locations on the template, and then carefully align and attach the drill template to the tailgate, using the three clip locations as your alignment guide



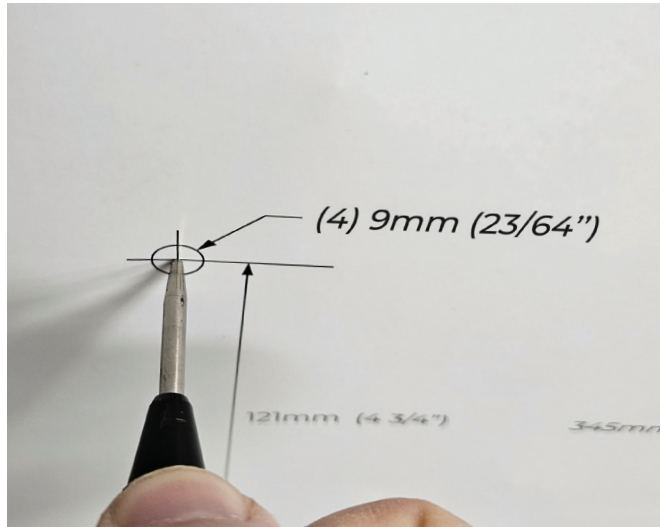
NOTE: (On the early versions of this template it is best to line up the top of the 3-template alignment holes with the bottom of the panels clip locations. This is done to land your drill points along the center of the brace inside of the tailgate. These braces are indicated by the small spot welds on the tailgate indicated in blue below.)

This template will be adjusted and made available as soon as possible. Contact Support@maxsonics.com to receive the updated template or help on verifying where the holes should be.



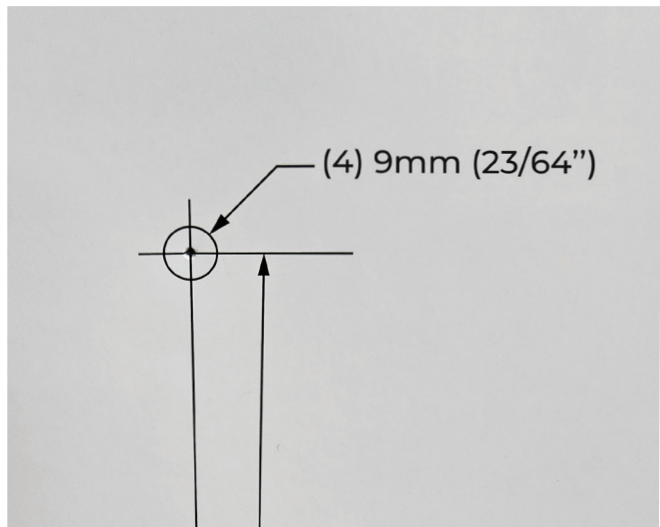
Wrangler JK Installation Instructions

- Use a center punch to mark your hole locations.



- Drill (4) 9mm or 23/64" holes at the punched locations.

Tech Tip - Be mindful not to let the drill bit continue to the outer tailgate shell. A drill bit stop collar can be very helpful.



Wrangler JK Installation Instructions

- Installing the provided threaded inserts, We recommend using a threaded insert tool for this.



- Place the threaded insert into the previously drilled 9mm or 23/64" hole and squeeze the handle until the threaded insert is completely compressed.



Wrangler JK Installation Instructions

- To remove the tool from the threaded insert simply turn the knob at the rear of the tool, to release the threads from within the threaded insert. The threaded insert should remain securely into the hole and not have any play.

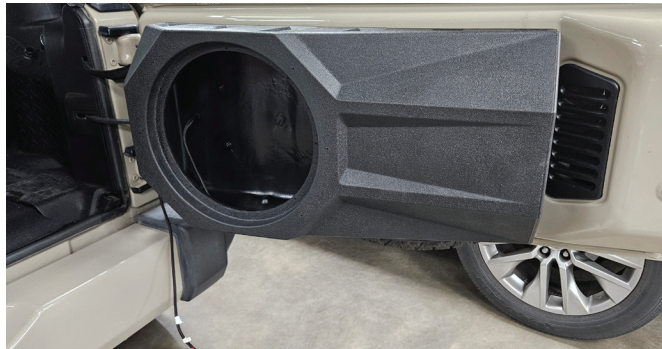
Repeat for all four threaded insert locations.



- Attach the provided foam patch over the OEM wires near the top of the tailgate.



- Hold the empty enclosure up to the tailgate to align the four holes in the enclosure to the threaded insert locations.



- Loosely install the (4) M6x40mm Hex Bolts through the enclosure into the threaded inserts.



Installation Instructions

- Connect the red wire to the + terminal and the black wire to the terminal of the subwoofer.
- Install the subwoofer with eight ST4.2 x 19mm screws using a T20 Torx.

NOTE: DO NOT OVER TIGHTEN!



- Install the subwoofer grill to the enclosure with six ST4.2 x 19mm screws using a T20 Torx.

NOTE: DO NOT OVER TIGHTEN!



- Secure subwoofer enclosure wiring along vehicle tailgate wiring using zip ties. After, connect the extension harness and continue to amplifier location and make proper connections.
- Reconnect the negative battery terminal of the vehicle.



FCC Notification

This equipment has been tested and found to comply with the limits for a Class B digital device, pursuant to part 15 of the FCC Rules. These limits are designed to provide reasonable protection against harmful interference in a mobile installation. This equipment generates uses and can radiate radio frequency energy. If not installed and used in accordance with the instructions, this equipment may cause harmful interference to radio communications. There is no guarantee that interference will not occur in a particular installation.

WARNING: Changes or modifications not expressly approved by the party responsible for compliance could void the user's authority to operate the equipment.

This equipment complied with FCC radiation exposure limits set forth for an uncontrolled environment. This equipment should be installed and operated with a minimum distance of 20cm between the radiator and your body.



WARRANTY

Maxxsonics, LLC. warrants this product, to the original consumer purchaser, to be free from defects in material and workmanship for a period of one (1) year from the date of purchase. Maxxsonics, LLC. will, at its discretion, repair or replace defective products during the warranty period. Components that prove to be defective in materials and workmanship under proper installation and use must be returned to the original authorized Maxxsonics, LLC. retailer from where it was purchased. A photocopy of the original receipt must accompany the product being returned. The costs associated with removal, re-installation, and freight are not the responsibility of Maxxsonics, LLC. This warranty is limited to defective parts and specifically excludes any incidental or consequential damages connected therewith. To view the full warranty, please visit the website.

MB Quart products are designed and engineered in the USA by

MAXXSONICS®

www.maxxsonics.com