

**INTEGRATE SUBSYS INTO 2018 RZR Turbo S, 2019 RZR XP, XP Turbo and Turbo S**  
 subsys-upgrade-2019/rev1

== =

**Q: Will a SUBSYS fit my Polaris RZR?**

*A: Yes, if your RZR is a 2013 or newer. If you have a 2018 XP Turbo S or 2019 RZR XP vehicles you will have to do a simple modification to the subwoofer enclosure. See the attached step by step and photos in the MAXXLab Sheet. If you have a 2012 or older, consider the UNI-8 or UNI-6. The UNI kits are designed to work on any brand machine, any year.*

**FITMENT GUIDE**

| Model  | Pre-2013     | 2013 | 2014 | 2015 | 2016 | 2017 | 2018 | 2019 |
|--|--------------|------|------|------|------|------|------|------|
| RZR XP/XP4 1000  | N/A          | Yes  | Yes  | Yes  | Yes  | Yes  | Yes  | No*  |
| RZR XP/XP4 Turbo                                       | N/A          | N/A  | Yes  | Yes  | Yes  | Yes  | Yes  | No*  |
| RZR Turbo S/Turbo S4                                   | N/A          | N/A  | N/A  | N/A  | N/A  | N/A  | No*  | No*  |
| RZR 900/900S/1000S                                     | Uni6 / Uni 8 | N/A  | Yes  | Yes  | Yes  | Yes  | Yes  | Yes  |
| RZR S4 900   | Uni6 / Uni 8 | N/A  | Yes  | Yes  | Yes  | Yes  | Yes  | N/A  |
| RZR S4 1000  | N/A          | N/A  | N/A  | N/A  | N/A  | N/A  | N/A  | Yes  |
| RZR 800  | Uni6 / Uni 8 | N/A  | N/A  | N/A  | N/A  | N/A  | N/A  | N/A  |
| *Need Phase 2 Amp Plate and Sub Enclosure Modification |              |      |      |      |      |      |      |      |

**PREPARATION**

- Flat work surface
- A partner to help hold the subwoofer enclosure while modifying

**TOOLS NEEDED:**

- Cutting Tool (Air Saw, Hacksaw, Sawzall, i.e.)
- Grinding Tool (Dremel, Grinder, i.e.)

**SAFETY**

- EYE PRTECTION WELDING MASK FOR GRINDER
- HEAVY GLOVES FOR CUTTING METAL

**TIME REQUIRED:**

- 10-15 MIN

MAXXLab Technical Team

Chad Marra  
 Armando Triana  
 Jim White  
 Brian Sherman  
 Todd Ramsev





## **MODIFICATION = MOD**

As machines evolve, we strive to quickly make sure that our audio products fit every version of every machine. In the case of the machines list on this document, a slight modification is required currently. Doing this modification in no way will affect your warranty.

Due to change in the metal work in the dash, the MOD is removing the 4 front studs on the enclosure so that it will clear the support bar in the 2018 RZR Turbo S, 2019 RZR XP, XP Turbo and Turbo S machines as shown in FIG-1-1.

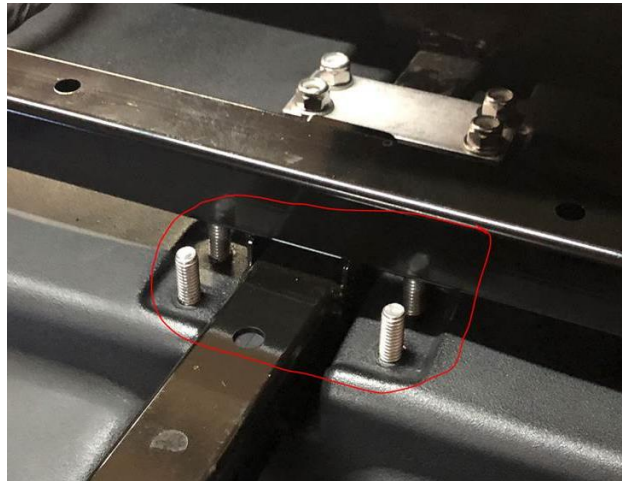


FIG-1-1

These 4 studs need to be removed with a cutting tool (Air Saw, Hacksaw, Sawzall, i.e) or what other cutting device that you would like to use. After cutting the studs flush go back with a grinding device and clean up the area. After removal the subwoofer enclosure will look like the photo in FIG 1-2.



FIG-1-2

MAXXLab Technical Team